



Luxair LED Conversion Kits



LED Light Fittings
Kits will contain either
2, 3 or 4 fittings

Plug Fitting - This
will be a different
fitting to the
halogen fitting you
already have

Female plug fitting to
connect the LED driver to
the light fitting

LED Driver





STEP 1

-Remove the chimney section completely so that the motor housing is accessible



STEP 2

-Remove the 2 screws securing the chimney to the hood



STEP 3

-Remove the chimney section



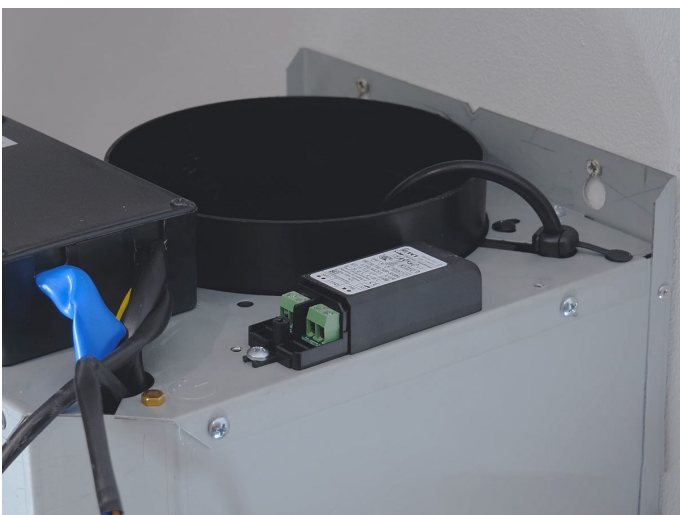
STEP 4

- Locate the connector plugs for the halogen fittings and disconnect them.



STEP 5

-Remove the halogen fittings

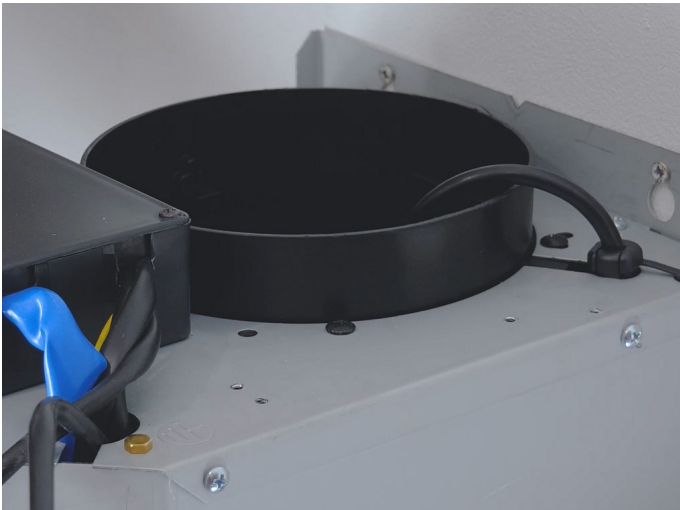


STEP 6

-Remove the transformer cap and release the wires.



-Remove the transformer cap and release the wires.



STEP 7

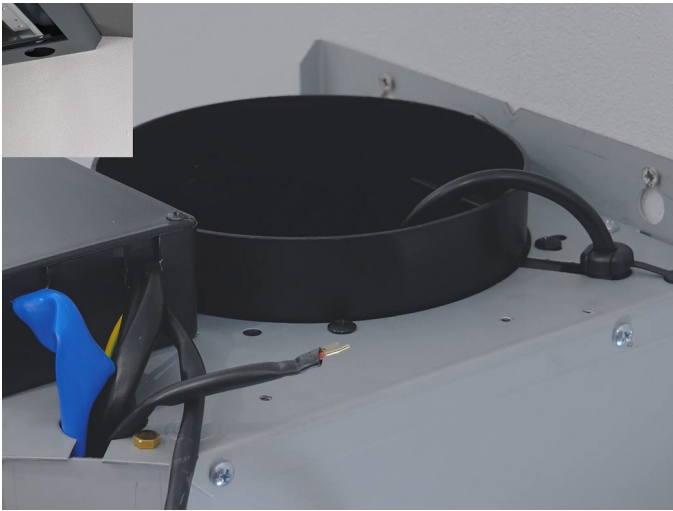
-Unscrew the fittings and remove the transformer



STEP 8

-Remove the halogen fitting cable. This should pull through as it has been disconnected from the driver.

- Please note this cable has a different fitting to the of the LED light fittings.



STEP 9

- Feed the new cable for the LED fittings through the access hole



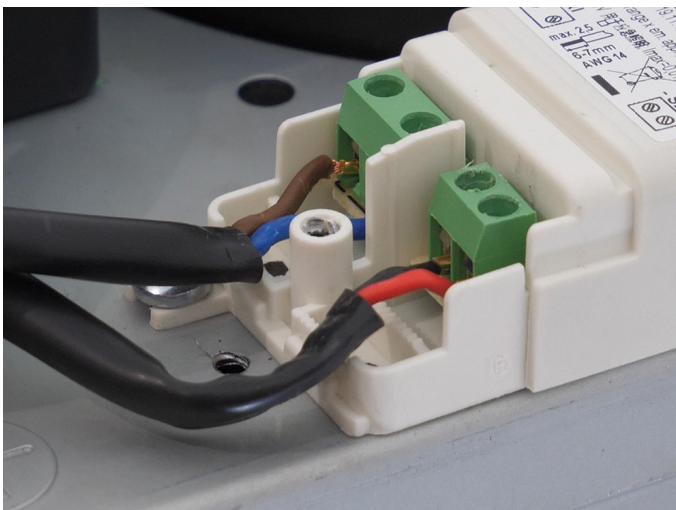
STEP 10

- Locate and secure the LED driver.
- Remove the cap



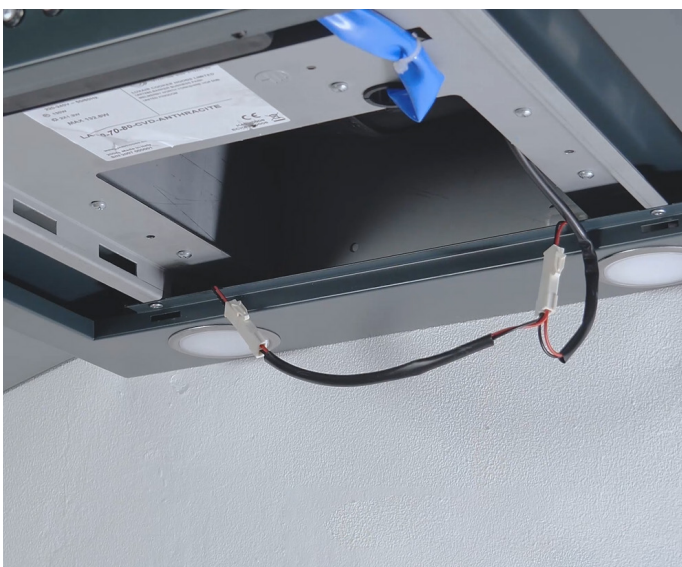
STEP 11

- Connect each wire to the correct terminal.
- These terminals will be different to the halogen transformer terminals.
- Replace the plastic ring



STEP 12

- Connect each wire to the correct terminal.
- These terminals will be different to the halogen transformer terminals.
- Replace the plastic ring



STEP 13

- Fit the LED fittings and connect to the new cable.
- Secure the cable behind the hood frame and replace the metal grease filters



